

OUR MOST SPACE EFFICIENT HOME LIFT

Aritco HomeLift Compact Datasheet 2023

Sometimes great things come in small packages. Our most space-efficient lift, the Aritco HomeLift Compact, opens up a world of possibilities in homes that were previously considered too limited in space for a lift. With its modern design, customizable features, and connectivity, the home lift offers the advantages of being small combined with the ability to think big.

Aritco HomeLift Compact offers you an unique Aritco Scandinavian design; a sleek platform design, a DesignWall and control panel with integrated handrail, double doors and contemporary and flexible shaft glass solutions.



Aritco Lift AB
Elektronikhöjden 14, Box 516
175 26 Järfälla, Sweden

T: +46 (0) 8 120 401 00
E: info@aritco.com
www.aritco.com

Certified Partner:



Amco Elevation Sdn. Bhd.
P-1-18 Plaza Damas
Jalan Sri Hartamas 1, Sri Hartamas
50480 Kuala Lumpur, Malaysia

T: +603 6203 6900
E: lifts@amco.com.my
www.amco.com.my

Explore

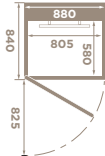
Aritco HomeLift Compact

Key features

The lift also serve you several customization possibilities. You can choose from more than 200 different colors, 2 different glass types, 8 different floorings and a DesignWall (backwall) with 8 different artworks. The lift is SmartLift enabled which means you also get live status information in the app and the maintenance provider can get access to a Fleet management system for remote monitoring and support of the lift. The lift is also equipped with our SmartSafety system, with safety features, to meet all situations that can occur in a home, to prevent accidents.

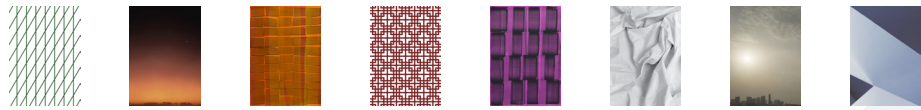


Sizes



MODEL	CARRIER SIZE	EXTERIOR DIMENSIONS	RATED LOAD
1	580 x 805 mm	840 x 880 mm	250 kg / 2 persons
2	880 x 805 mm	1140 x 880 mm	250 kg / 2 persons
3	1080 x 805 mm	1340 x 880 mm	250 kg / 2 persons

DesignWall



Lift color

Comes in three standard colors, Traffic White (RAL9016), Jet Black (RAL 9005) and Anthracite Grey (RAL7016). Can be painted in any RAL color from the RAL K7 classic chart (Except for pearl and fluorescent colors)



Glass

STANDARD
Clear glass



OPTIONAL
Tinted



Floor



Intended use

Home lift intended for transportation of persons in buildings where the users are known. Indoor installation environments

Technical compliance

European Machine Directive 2006/42/EC
European Standard EN 81-41

Drive system

Patented screw-and-nut system

Rated speed

Max 0.15 m/s

Emergency lowering

Battery-powered

Travel height

1 600 - 15 000 mm

Top height

Always 2 248 mm

Number of floors

2 to 6 floors

Installation

Recessed installation 50 mm below floor level
Installed directly on floor with 50 mm ramp

Operation

Hold to run (press and hold)
One-touch operation (press one time) for installations outside Europe

Power supply

230 V 1-phase

Warranty

Aritco HomeLift Compact comes with a 5-year product warranty and a 10-year drive technology warranty.

